

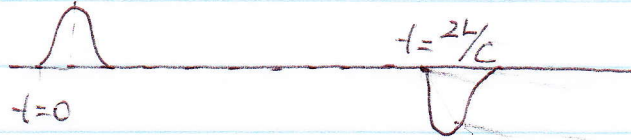
Homework 5 Problem 4

$t=0$ the time the bunch enters the stripline
 stripline length l , bunch speed c (speed of light)

$Z_1 = Z_0$

$Z_2 = Z_0$

port 1



port 2

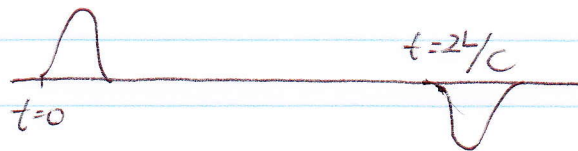


zero

$Z_1 = Z_0$

$Z_2 = 0$ or ∞

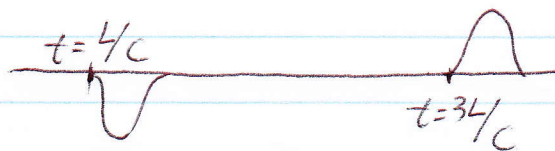
port 1



$Z_1 = 0$

$Z_2 = Z_0$

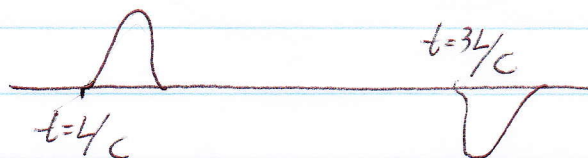
port 2



$Z_1 = \infty$

$Z_2 = Z_0$

port 2



* for " ∞ " or " 0 " termination, we don't measure the signal there. Thus we only plot the signal at " Z_0 " termination.